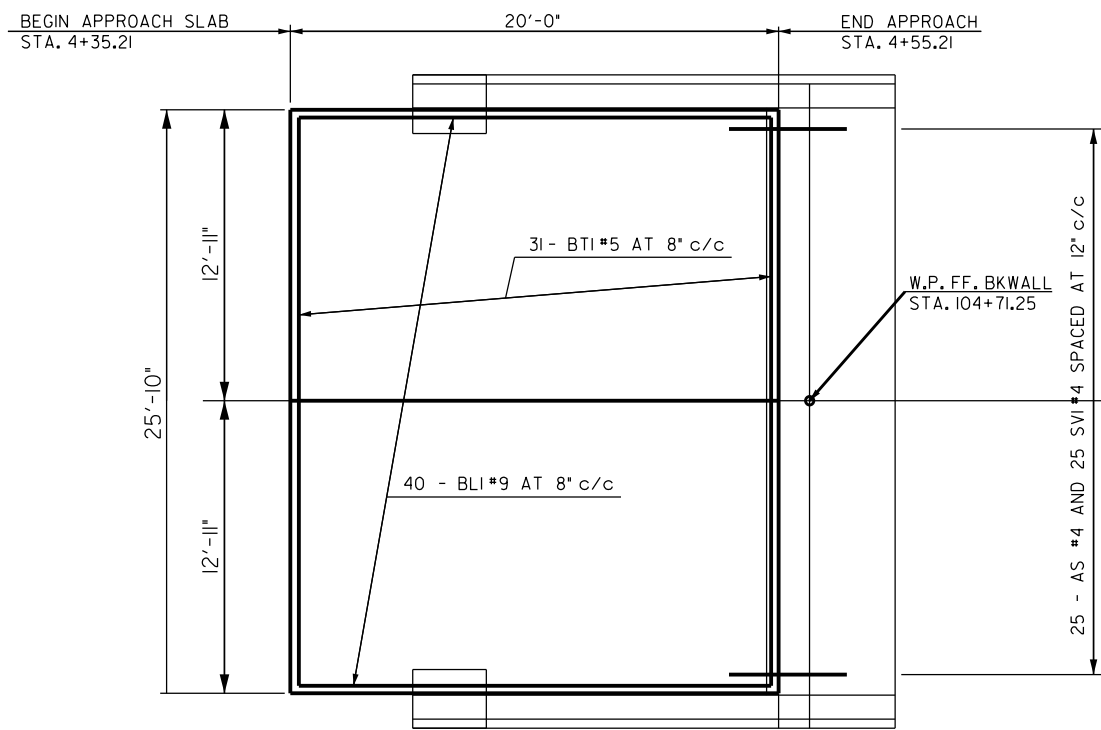
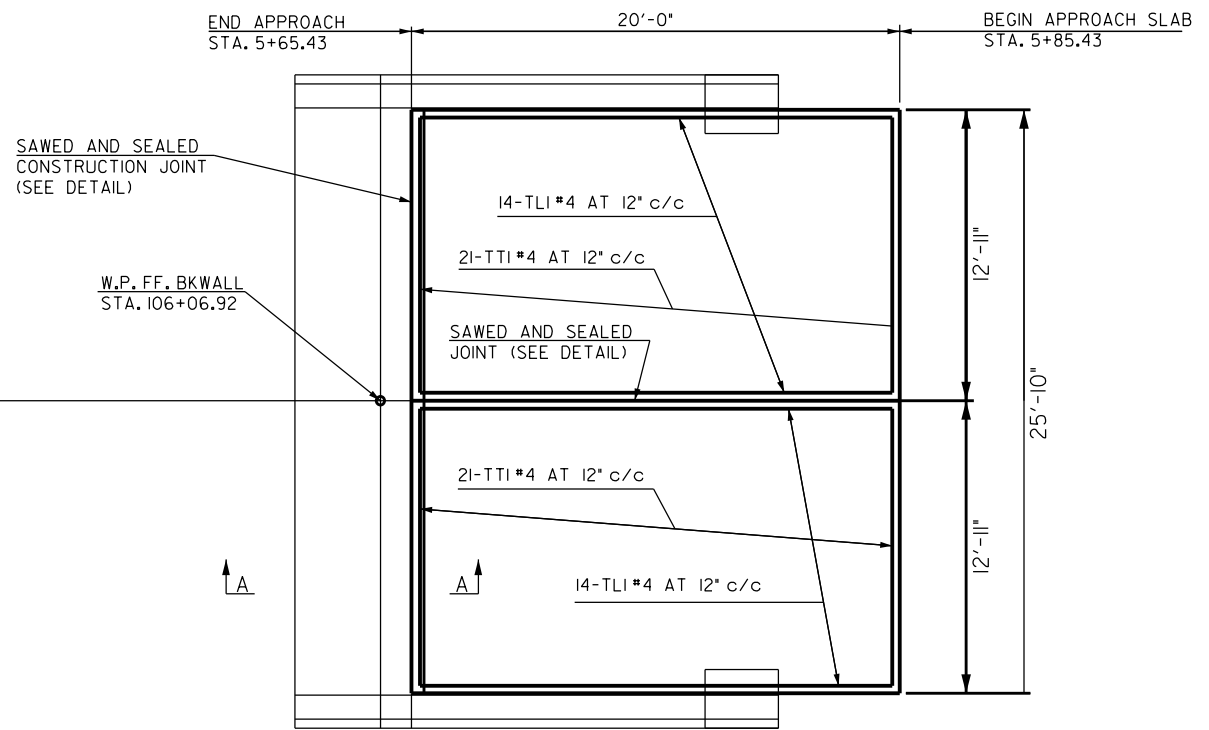


DESCRIPTION	REVISIONS	DATE

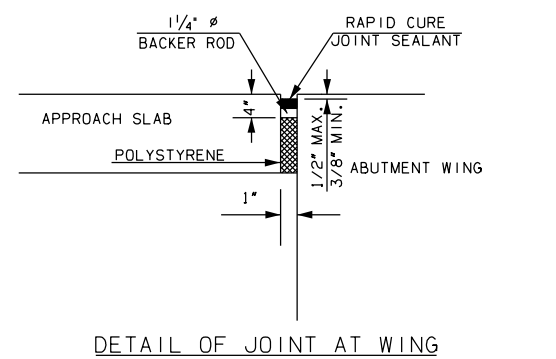


ABUT. NO. 1  
(BOTTOM SLAB REINFORCING SHOWN)

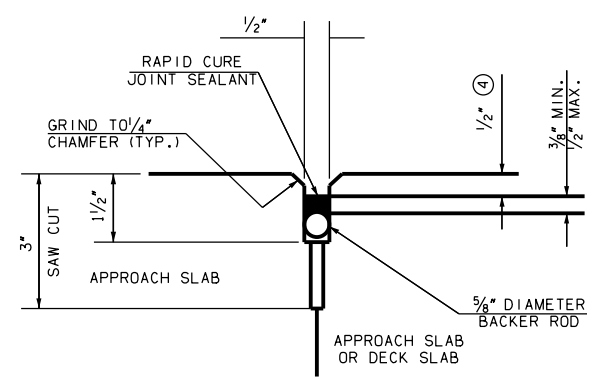


ABUT. NO. 2  
(TOP SLAB REINFORCING SHOWN)

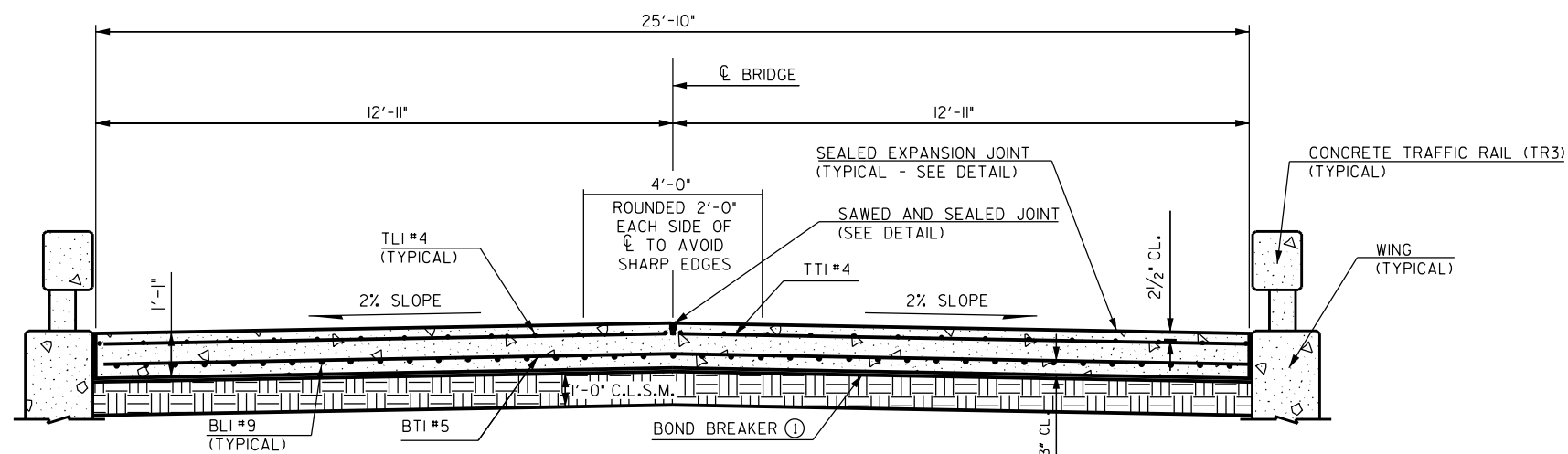
APPROACH SLAB LAYOUT



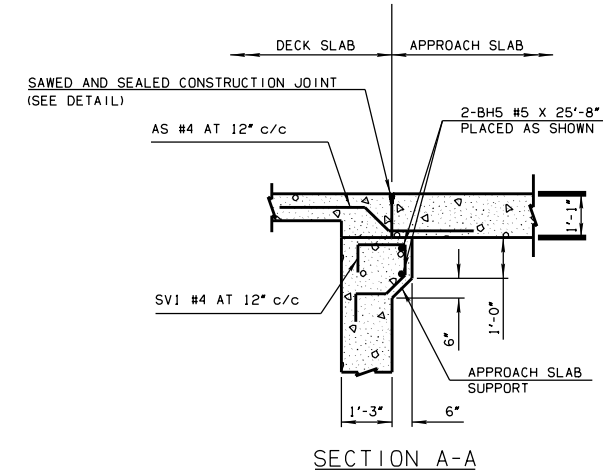
DETAIL OF JOINT AT WING



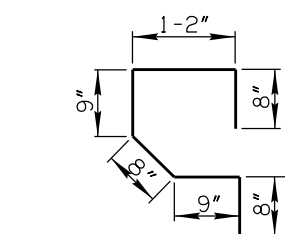
DETAIL OF SAWS AND SEALED JOINT



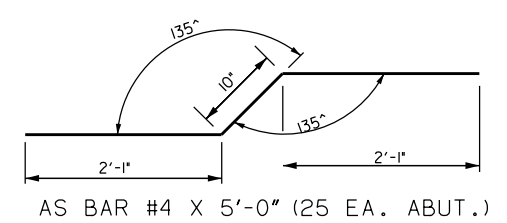
TYPICAL SECTION THRU APPROACH SLAB



SECTION A-A



SV1 #4 X 4'-8" (25 EA. ABUT.)



AS BAR #4 X 5'-0" (25 EA. ABUT.)

DETAILS OF BENT REINFORCING STEEL

MARK	NO.	SIZE	SHAPE	LENGTH
AS	25	#4	BNT.	5'-0"
BH5	2	#5	STR.	25' - 8"
BL1	40	#9	STR.	19' - 8"
BT1	31	#5	STR.	25' - 6"
SV1	27	#4	BNT.	4'-8"
TL1	28	#4	STR.	19' - 8"
TT1	42	#4	STR.	12' - 7"

NOTE: BAR LIST FOR INFORMATION ONLY. REINFORCING TO BE INCLUDED IN THE PRICE BID PER SQUARE YARD OF "APPROACH SLAB".

DESCRIPTION	UNITS	QUANTITY
APPROACH SLAB	SY	57.40
SAW-CUT GROOVING	SY	43.98

NOTES:

- THE BOND BREAKER SHALL BE ONE 6 MIL. OR TWO 4 MIL. POLYETHYLENE SHEETS. THE BOND BREAKER SHALL EXTEND THE FULL WIDTH AND LENGTH OF THE APPROACH SLAB BUT SHALL NOT BE PLACED ABOVE THE APPROACH SLAB SUPPORT AS SHOWN IN SECTION A-A.
- AS BARS SHALL BE TIED TO THE TOP LAYER OF REINFORCING STEEL IN THE DECK SLAB AND TO THE BOTTOM LAYER OF REINFORCING STEEL IN THE APPROACH SLAB. AS BARS SHALL BE INSTALLED BEFORE PLACING DECK SLAB CONCRETE. AS BARS ARE INCLUDED IN THE SUPERSTRUCTURE REINFORCING STEEL QUANTITIES.
- THE APPROACH SLAB SUPPORT AT THE BACK FACE OF THE ABUTMENT BACKWALL SHALL BE CONSTRUCTED WITH THE ABUTMENT BACKWALL. SV1 AND BH5 BARS SHALL BE INSTALLED BEFORE PLACING THE ABUTMENT BACKWALL CONCRETE. SV1 AND BH5 BARS ARE INCLUDED IN THE ABUTMENT REINFORCING STEEL QUANTITIES. CONCRETE FOR THE APPROACH SLAB SUPPORT IS INCLUDED IN THE ABUTMENT CLASS A CONCRETE QUANTITIES.
- AT TRANSVERSE JOINTS ONLY, THIS DIMENSION SHALL TAPER FROM 1/2" AT THE EDGE OF DRIVING LANES TO 0/8" AT TRAFFIC RAILS.
- QUANTITIES FOR SAW-CUT GROOVING WILL BE IN ACCORDANCE WITH SECTION 504.04.(1) OF THE STANDARD SPECIFICATIONS.
- THE UNIT PRICE BID PER SQUARE YARD OF "APPROACH SLAB" SHALL INCLUDE ALL COST TO CONSTRUCT THE APPROACH SLAB INCLUDING THE COST OF ALL CONCRETE, ALL REINFORCING STEEL, BACKER ROD, RAPID CURE JOINT SEALANT, POLYSTYRENE, PREFORMED EXPANSION MATERIAL, POLYETHYLENE SHEETING, SAWING, GRINDING, CONCRETE BLOCK EXCAVATION, BACKFILL, MATERIALS, LABOR, EQUIPMENT, AND INCIDENTALS.

SOUTHEAST #3 CIRCUIT ENGINEERING DISTRICT  
 ATOKA COUNTY  
**DETAILS OF APPROACH SLAB**  
 STATE JOB NO. 31169(04) SHEET NO. B007